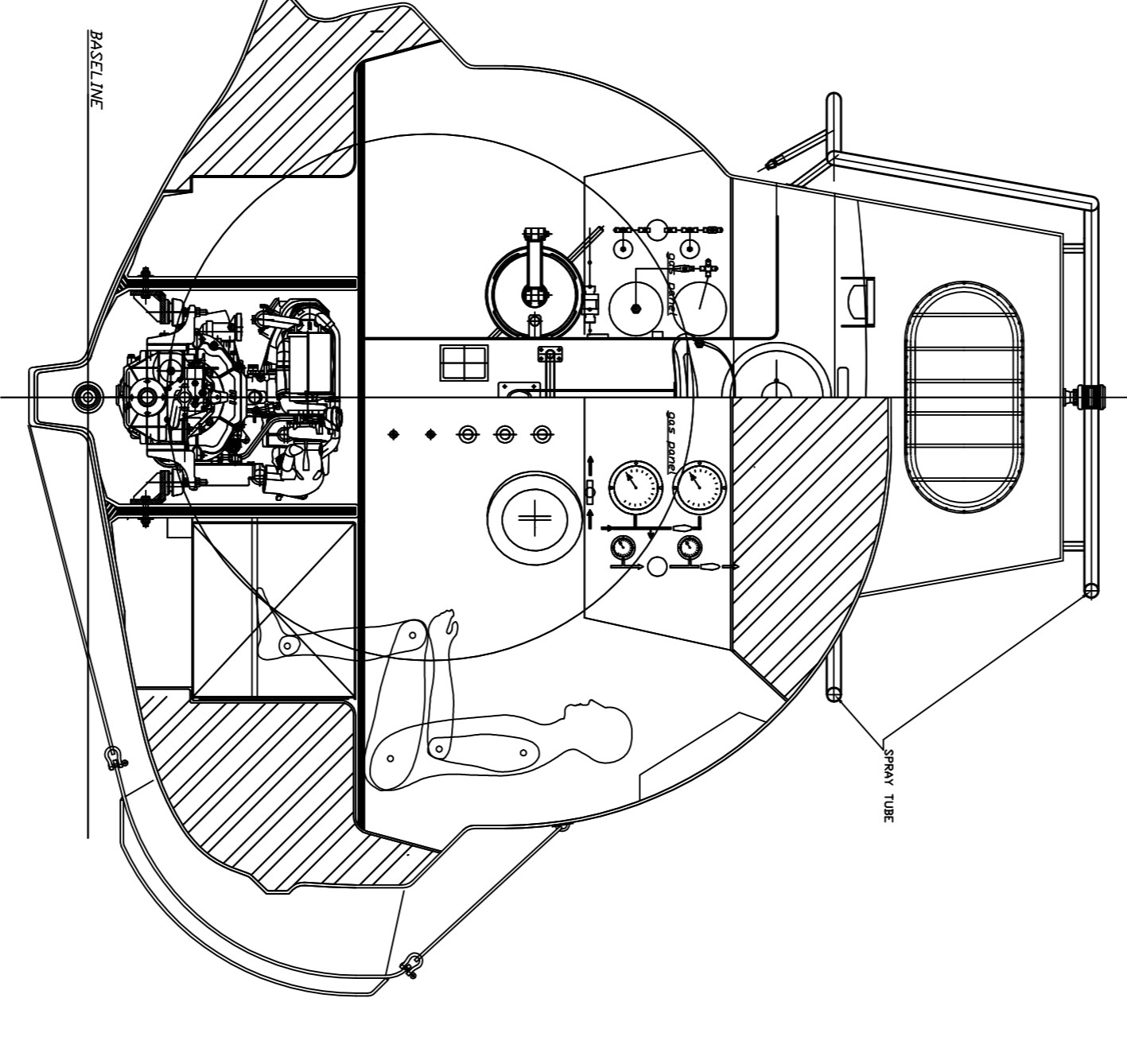
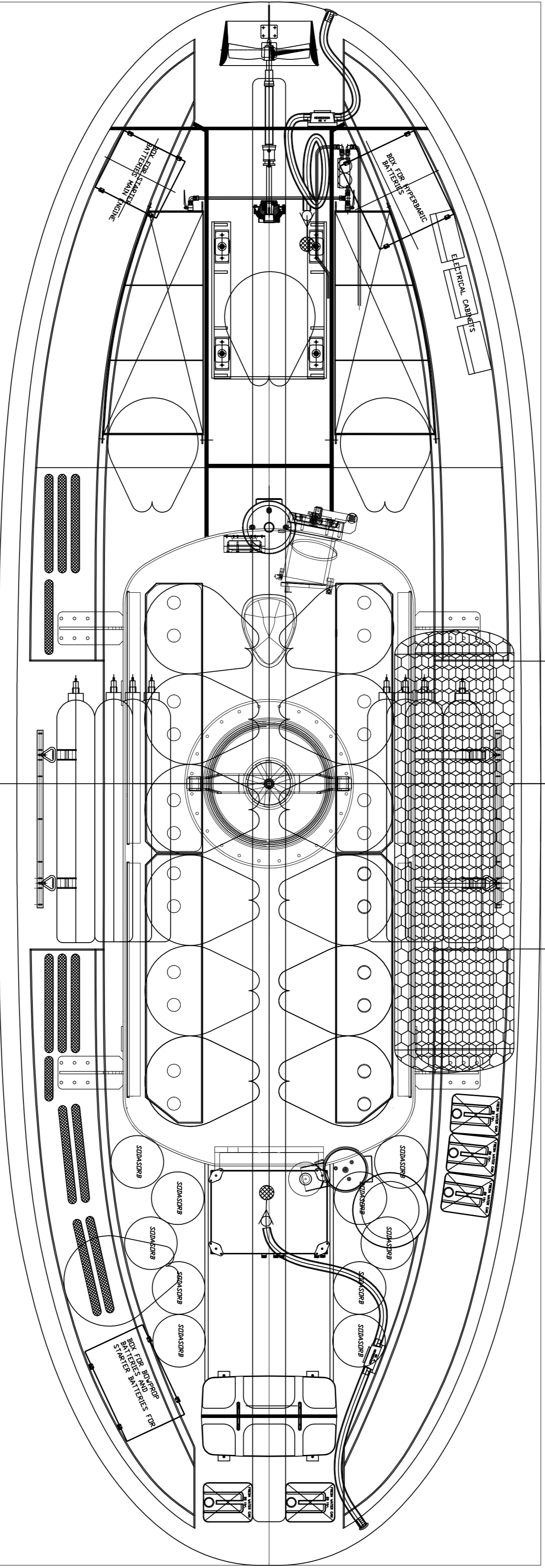
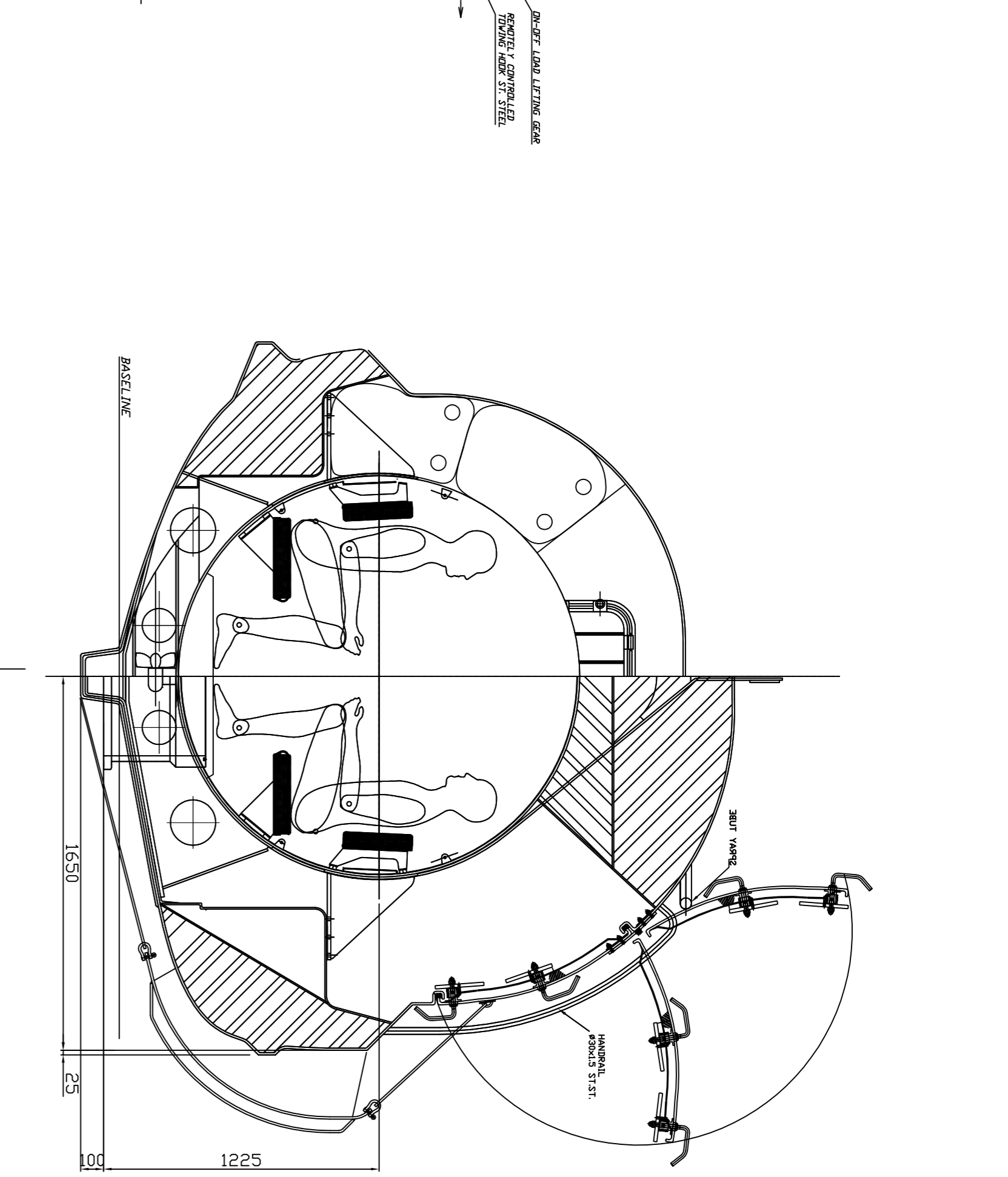
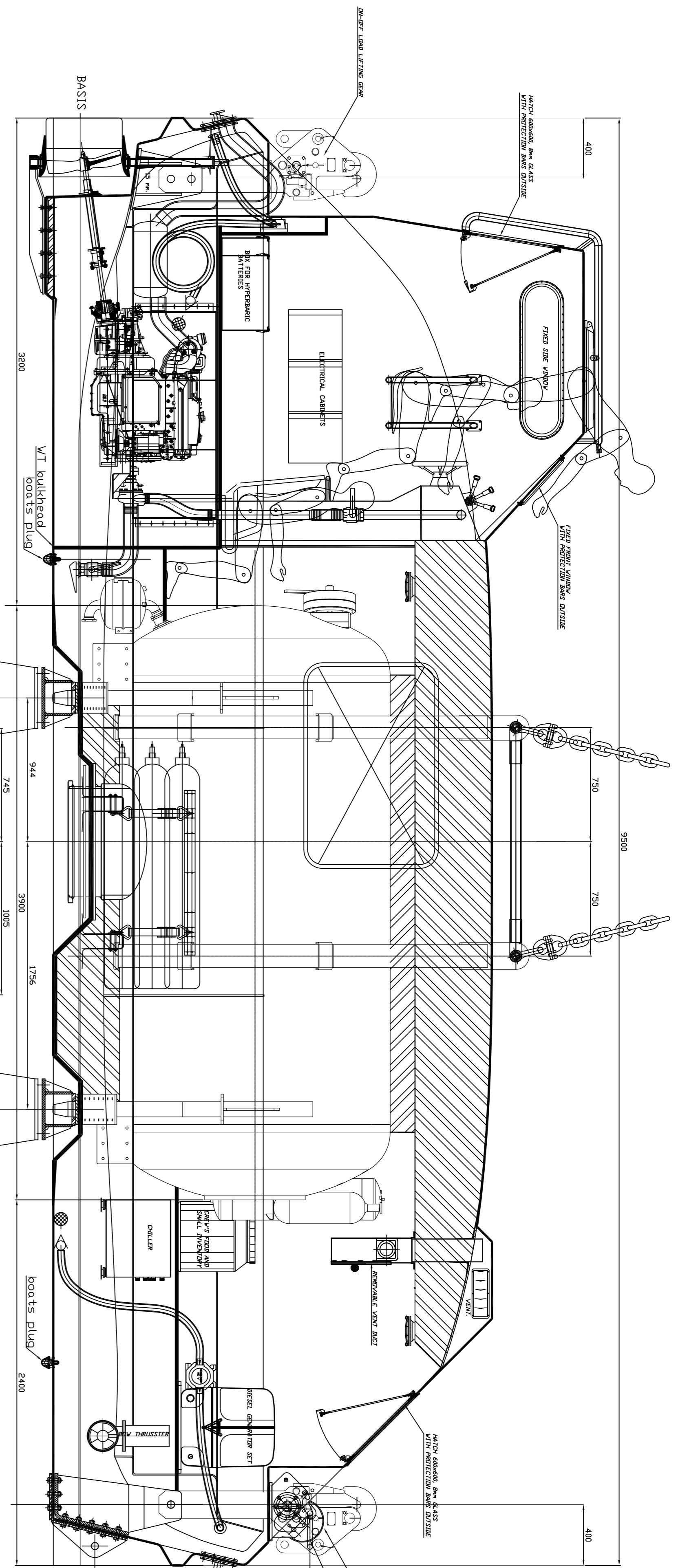


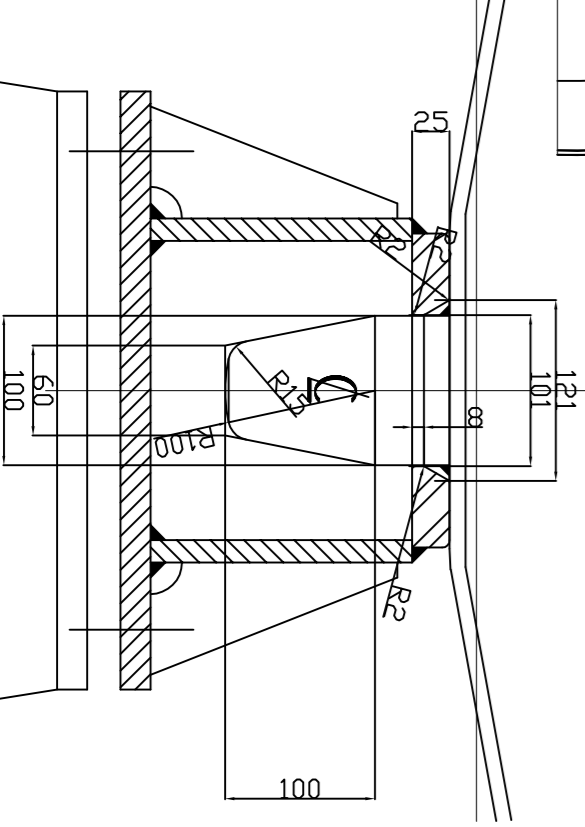
ITEM	QUANT	DESCRIPTION	MATERIAL	REMARKS	MASS	name	description	date	PROJECTION						
									name	description	date	SCALE	DATE	NAME	CHECKED
H									1:4.0	27.11.2008	De				
G															
F															
E															
D															
C															
B															
A															
<p style="text-align: center;"><b>OCEANWIDE SAFETY AT SEA</b></p> <p style="text-align: center;">Postbus 98 - Lathoum 1827 - Rotterdam - The Netherlands            Phone +31 (0) 10 - 2151023 - Fax +31 (0) 10 - 4230136            PO BOX 98025 - 3000 AB Rotterdam - Phone +31 (0) 10 - 4230136</p>							General Arrangement hyperbaric lifeboat 9,5m								
1:4.0 27.11.2008 De A2-4121															



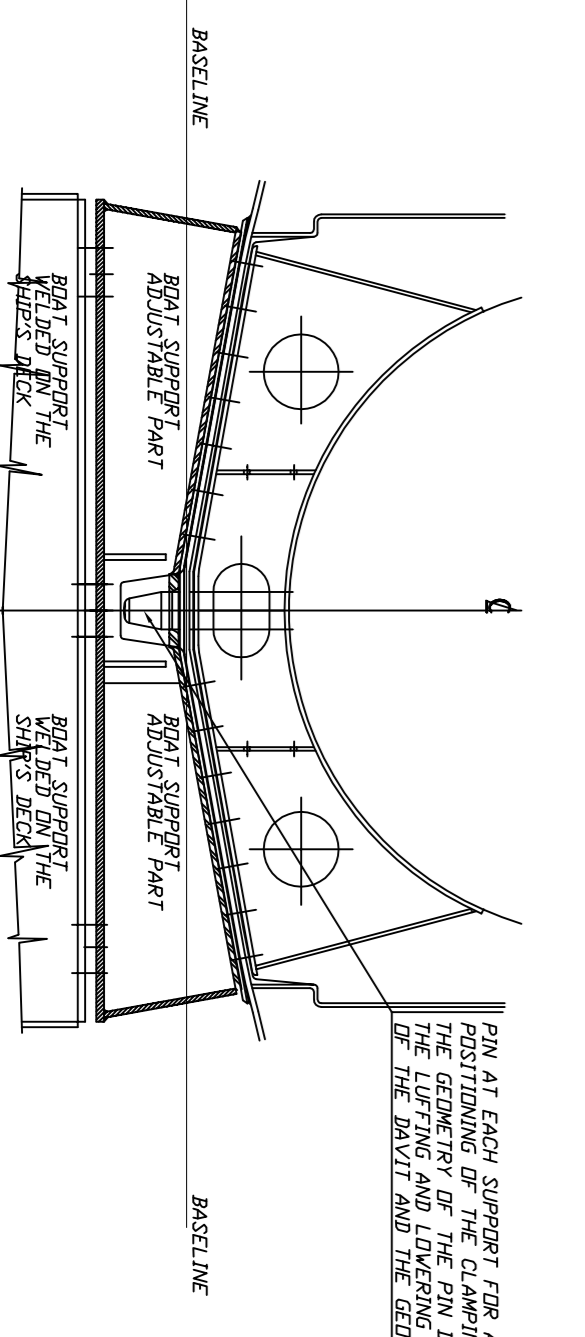
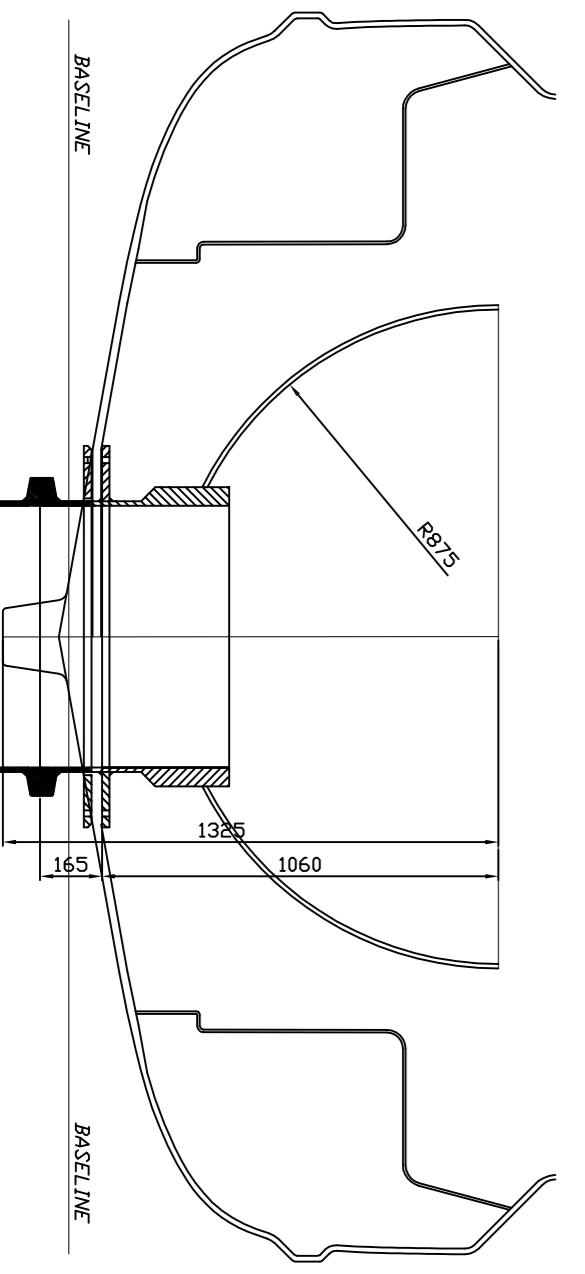
**MAIN PARTICULARS:**

LENGTH oa.	: 9,50 m.
LENGTH pp.	: 9,50 m.
BREADTH oa.	: 3,35 m.
BREADTH moulded	: 3,30 m.
DEPTH	: 1,28 m.
TOTAL HEIGHT	: 3,60 m.
NUMBER OF DIVERS	: 12 MAX.
NUMBER OF CREW	: 4 MAX.
ENDURANCE	: 72 HOURS
SPEED	: 6 KNOTS
HOOK	: ON/OFF LOAD
WEIGHT approx. (with DUPLEX chamber)	: 16 TONS

**POSITIONING PIN**



PIN AT EACH SUPPORT FOR ACCURATE POSITIONING OF THE RIN BEARING ON THE RIVET AND THE GEOMETRY OF THE FLANGES



Rev.	MOD.	DATE:	SIZE:	DRG.No.:	FROM DRG.No.:
		24-11-2008	A1	HLB 950-12-01-00	HLB1050-18-01-01
<b>OCEANWIDE SAFETY at SEA</b> <b>GENERAL ARRANGEMENT</b> 9.50M. TOTALLY ENCLOSED LIFEBOAT					
Breda Group - Hobbevoort 1327 - Rotterdam - The Netherlands Phone +31 (0) 10 - 215053 - Fax +31 (0) 10 - 4250136					
Filename : D:/HLB 12 DIVERS/ DWG.NO.					